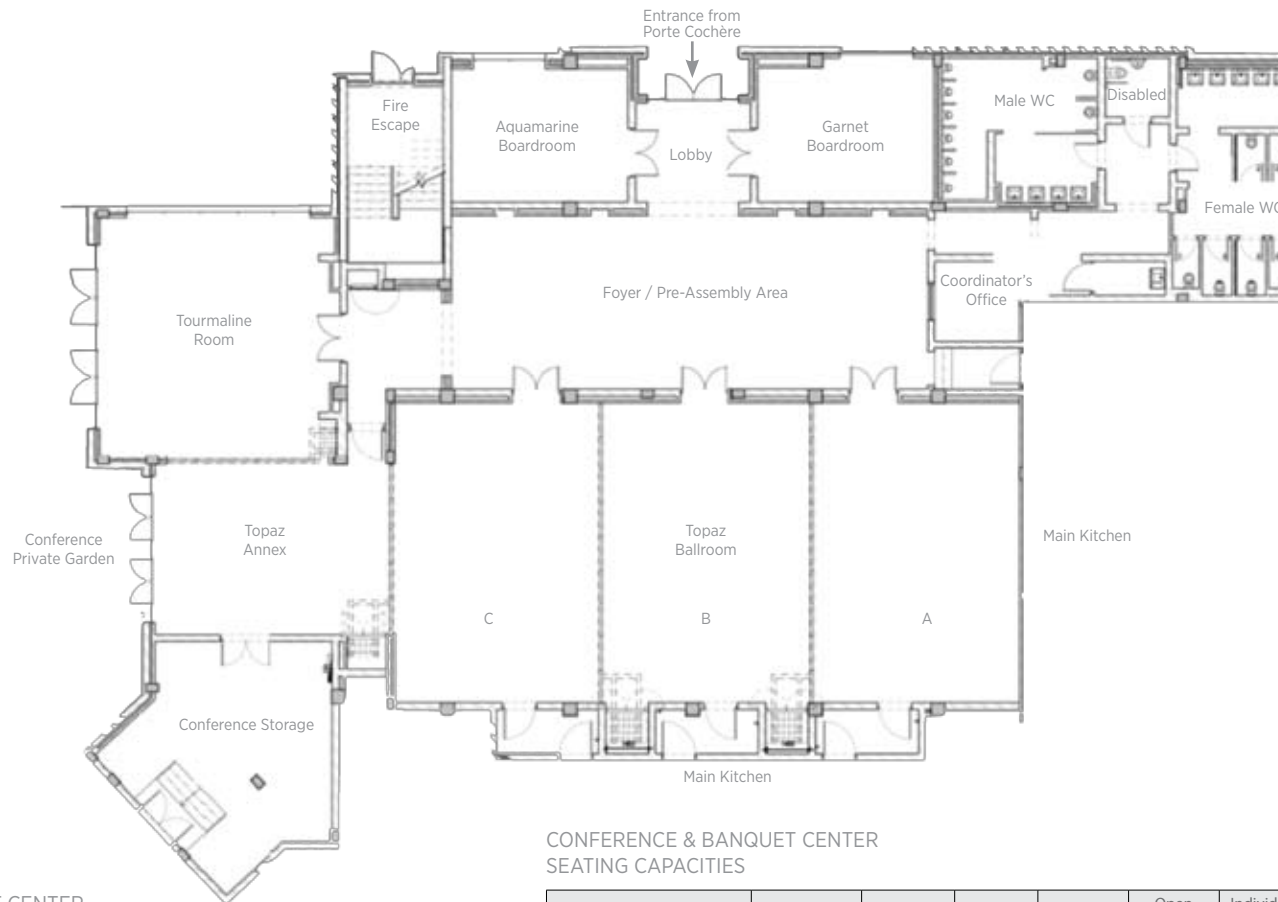




STRAND

CONFERENCE AND BANQUET CENTRE

LAYOUT & SEATING PLANS
ROOM DIMENSIONS



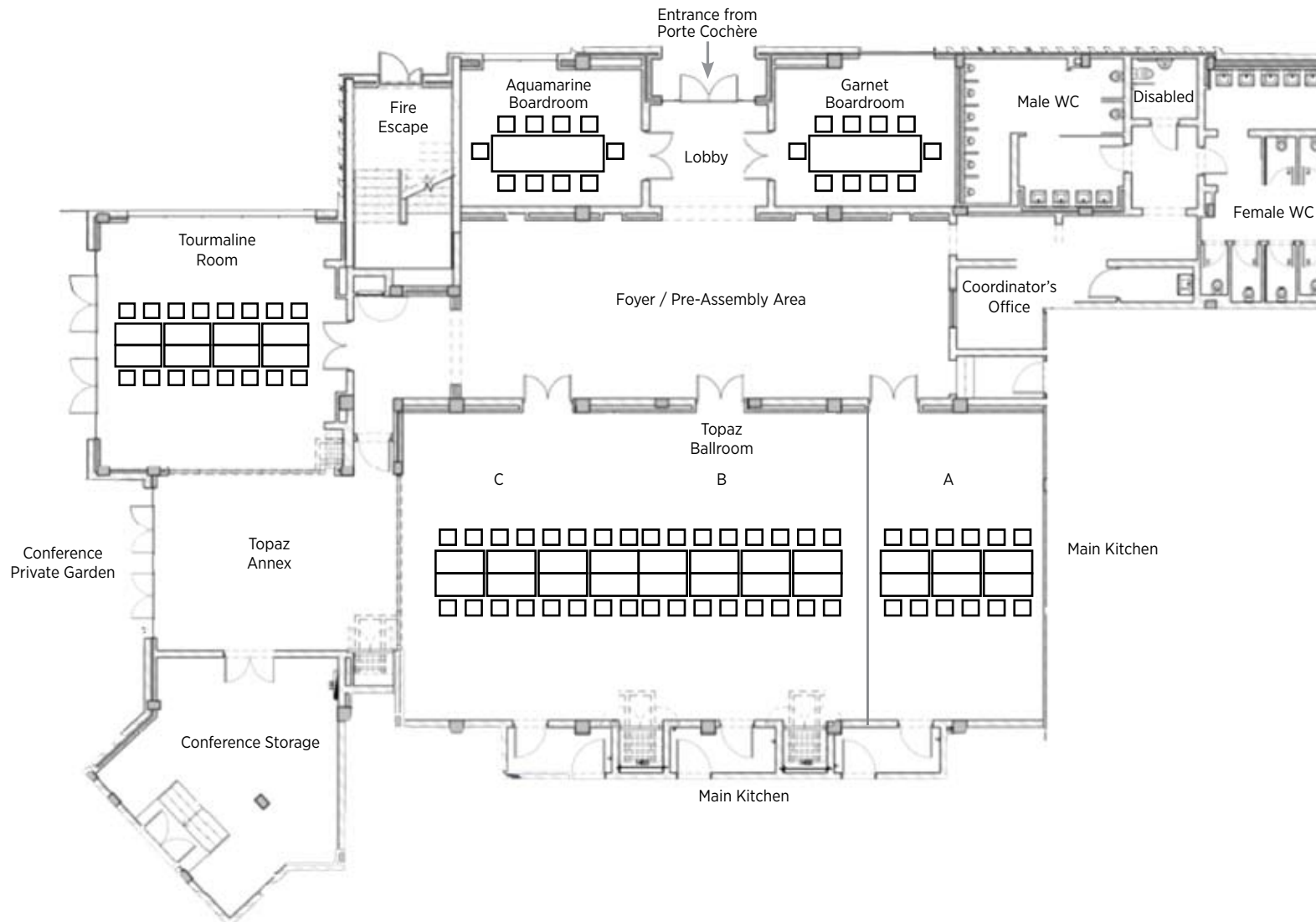
CONFERENCE & BANQUET CENTER
DIMENSIONS

Room	Width (m)	Length (m)	Height (m)	QM
Topaz Ballroom - Total	9,782	20,394	4,000	199.5
Topaz Ballroom A	9,782	6,798	4,000	66.5
Topaz Ballroom B	9,782	6,798	4,000	66.5
Topaz Ballroom C	9,782	6,798	4,000	66.5
Tourmaline Room	7,770	7,139	4,000	55.5
Aquamarine/Garnet Boardroom	4,415	5,739	2,800	25.3
Foyer	5,640	15,550	4,150	87.7
Topaz Annex	5,581	7,556	2,550	42.2

CONFERENCE & BANQUET CENTER
SEATING CAPACITIES

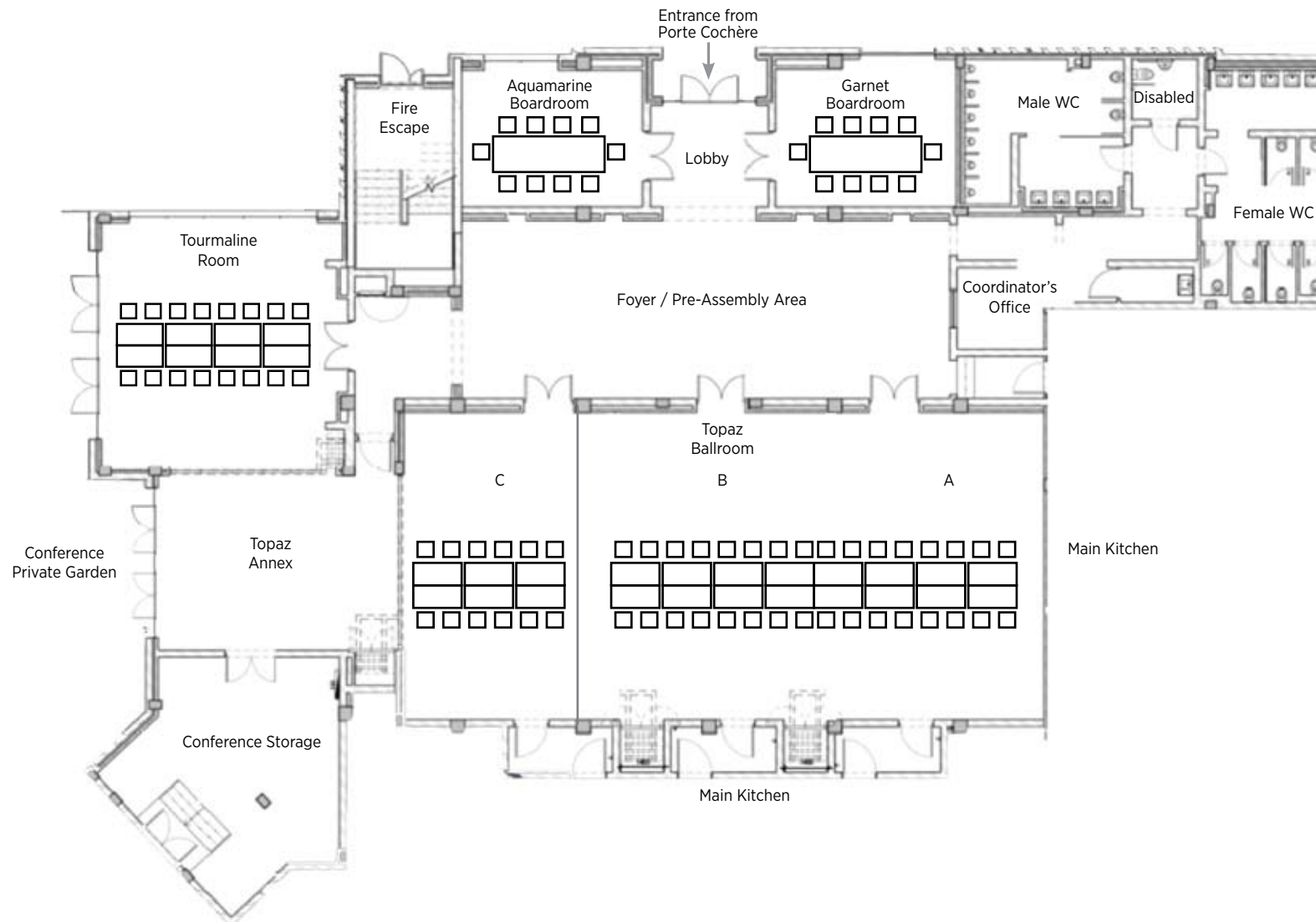
Room (Maximum)	Boardroom	Cinema	School	U-Shape	Open Square	Individual Meeting	Banquet	Cocktail
Topaz Ballroom - Total	N/A	252	132	56	66	42	120	120
Topaz Ballroom A	30	56	36	21	30	15	40	40
Topaz Ballroom B	30	56	36	21	30	18	40	40
Topaz Ballroom C	30	56	36	21	30	15	40	40
Topaz Ballroom A+B	48	140	84	39	48	30	80	80
Topaz Ballroom B+C	48	140	84	39	48	30	80	80
Tourmaline Room	24	55	27	18	24	12	40	40
Aquamarine/Garnet Boardroom	10	N/A	N/A	N/A	N/A	N/A	10	N/A
Foyer	N/A	N/A	N/A	N/A	N/A	18	40	60
Topaz Annex	N/A	N/A	N/A	N/A	N/A	12	30	30

BOARDROOM STYLE



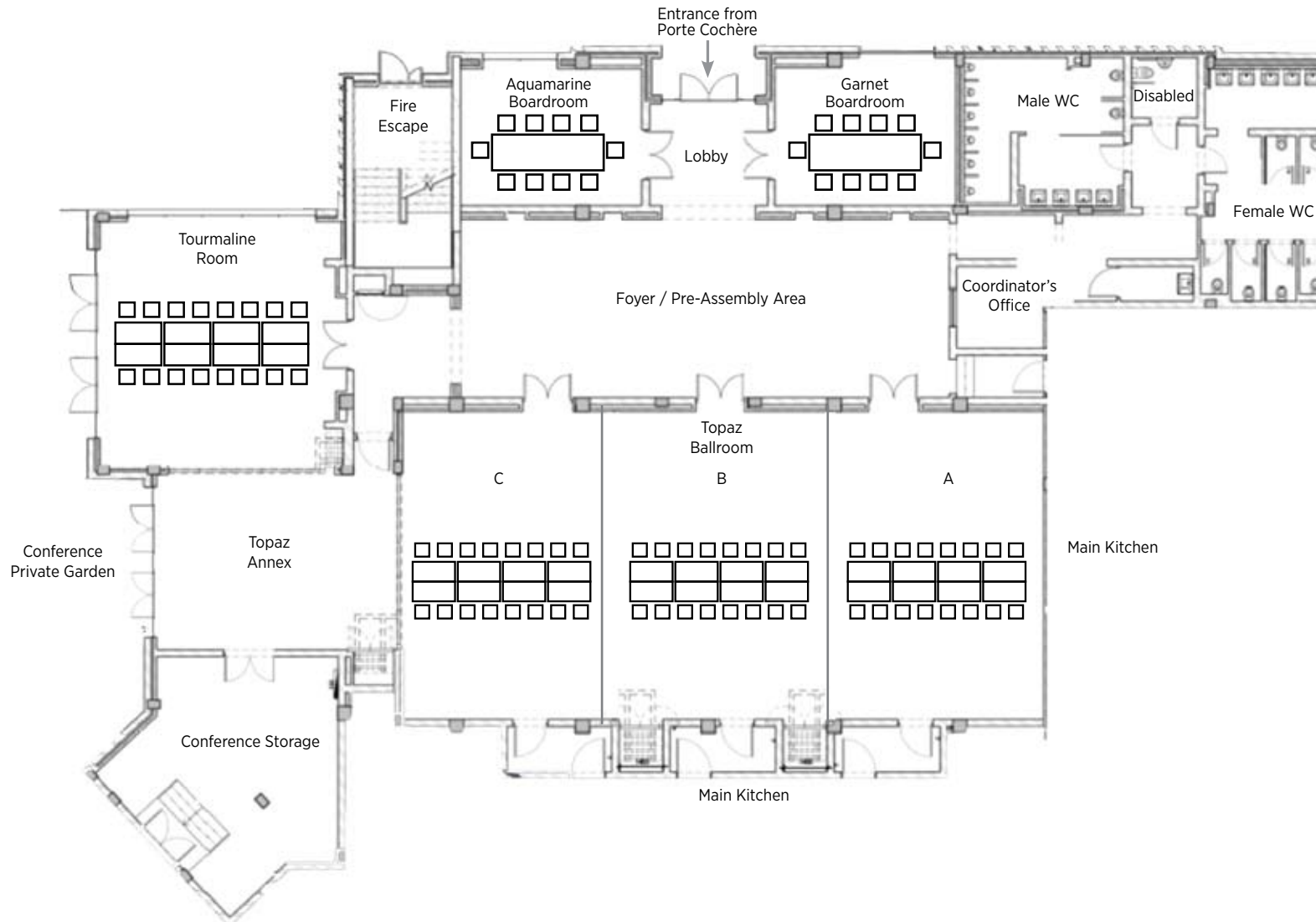
Topaz Ballroom = C & B = 32 / A = 12
Tourmaline Room = 16
Aquamarine or Garnet Board Room = 10

BOARDROOM STYLE



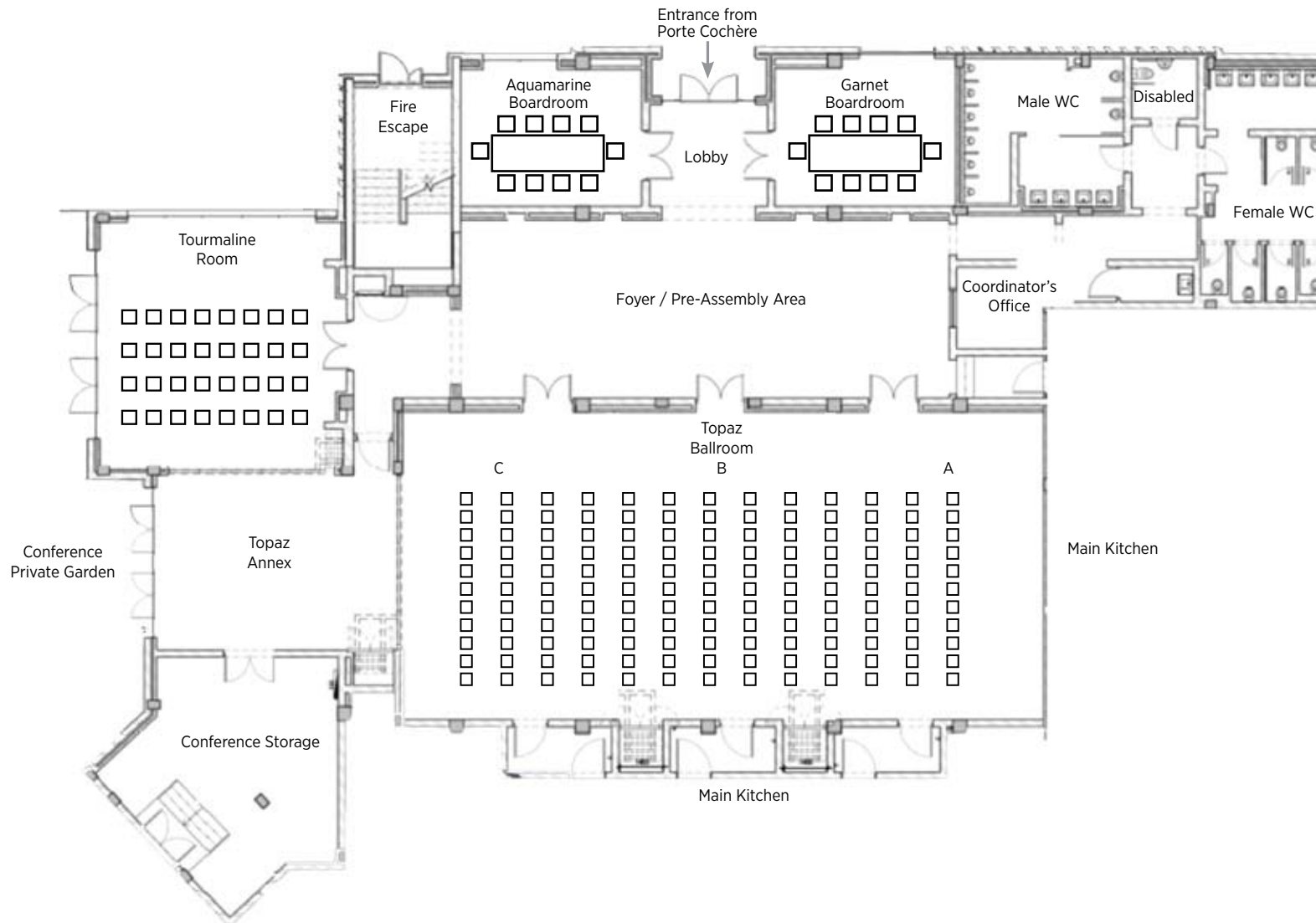
Topaz Ballroom = B & A = 32 / C = 12
Tourmaline Room = 16
Aquamarine or Garnet Board Room = 10

BOARDROOM STYLE



Topaz Ballroom = A = 16 / B = 16 / C = 12
Tourmaline Room = 16
Aquamarine or Garnet Board Room = 10

CINEMA STYLE

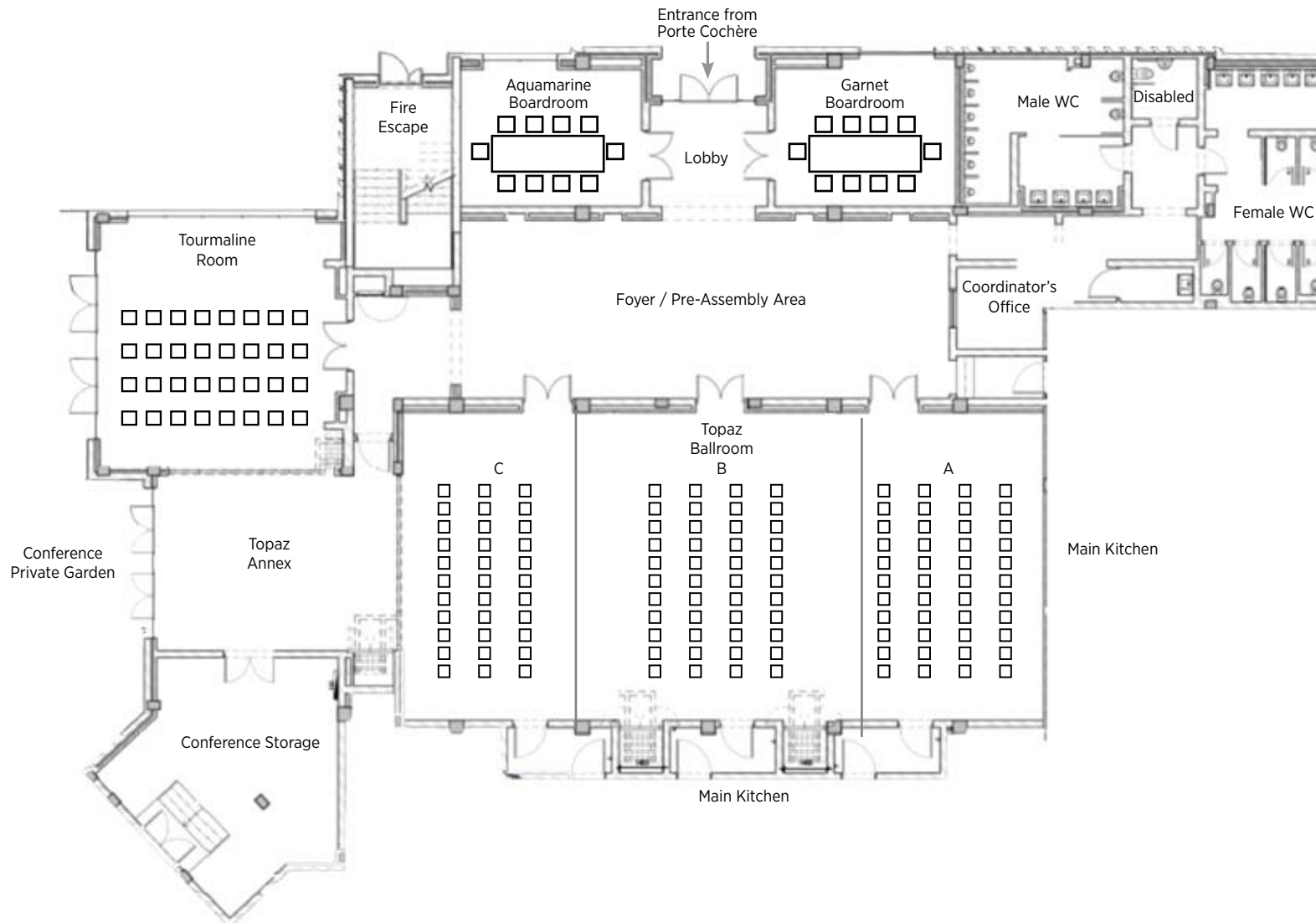


Topaz Ballroom - Total = 143

Tourmaline Room = 32

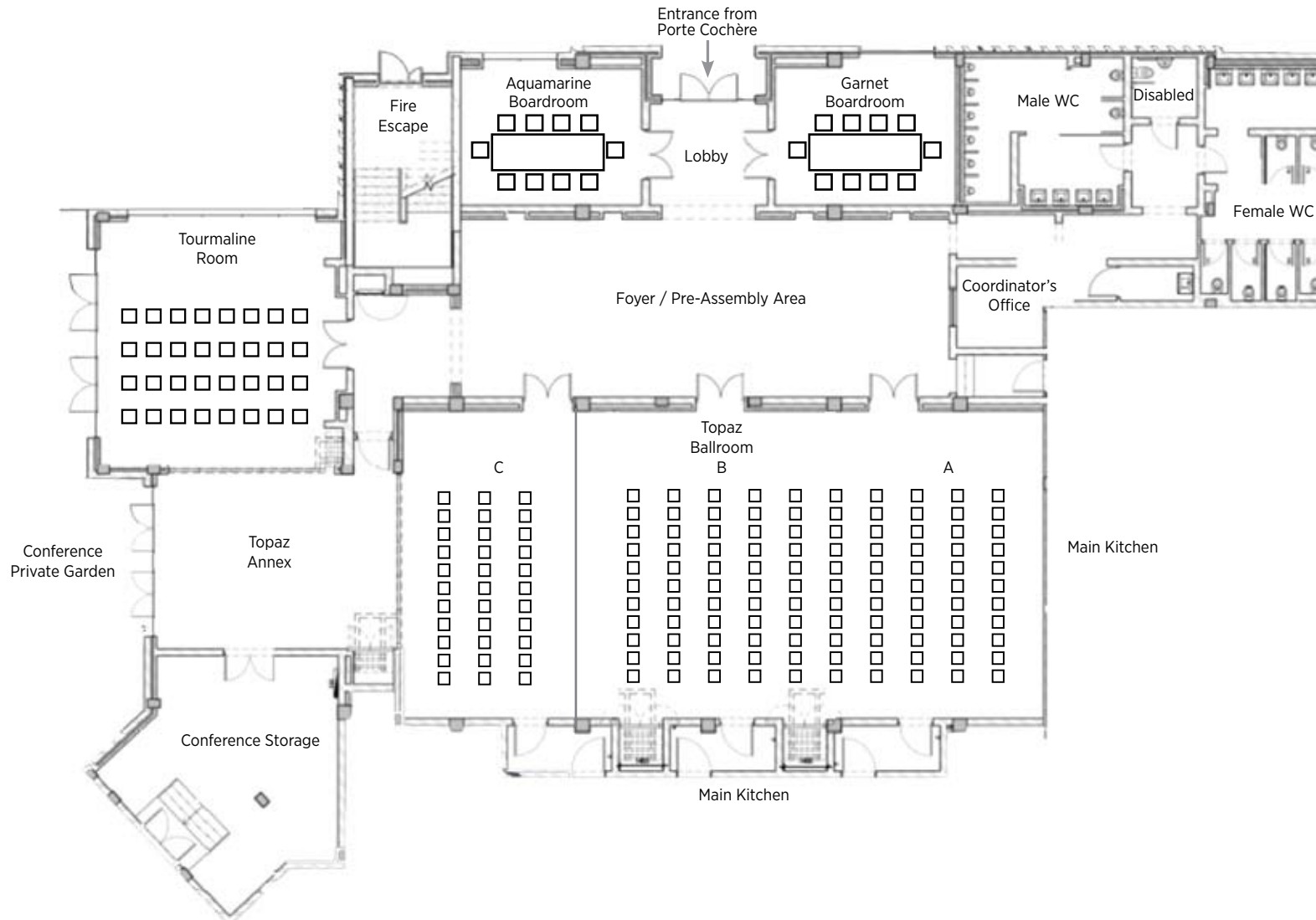
Aquamarine or Garnet Board Room = 10

CINEMA STYLE



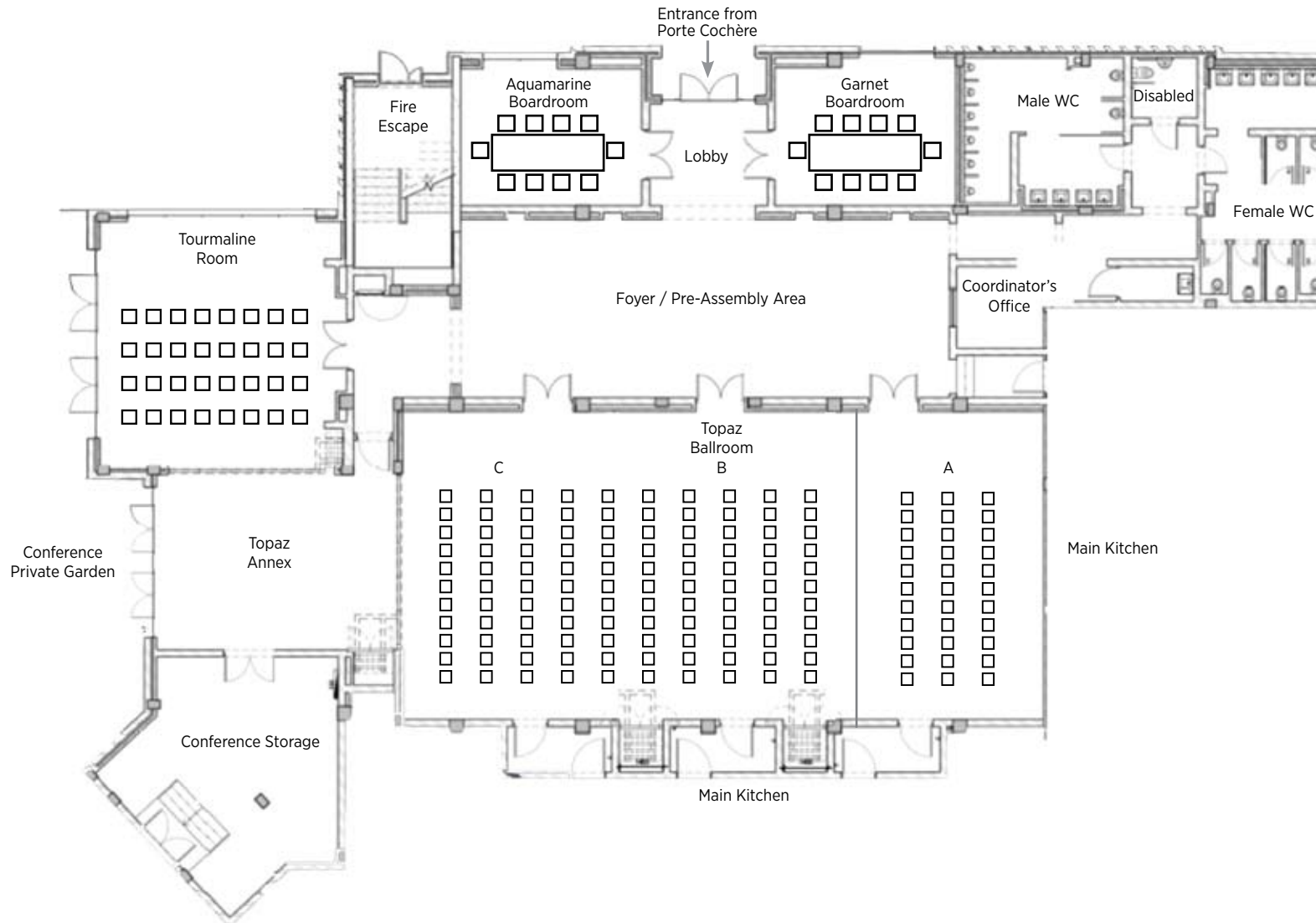
Topaz Ballroom - A =44 / B=44 / C= 33
 Tourmaline Room = 32
 Aquamarine or Garnet Board Room = 10

CINEMA STYLE



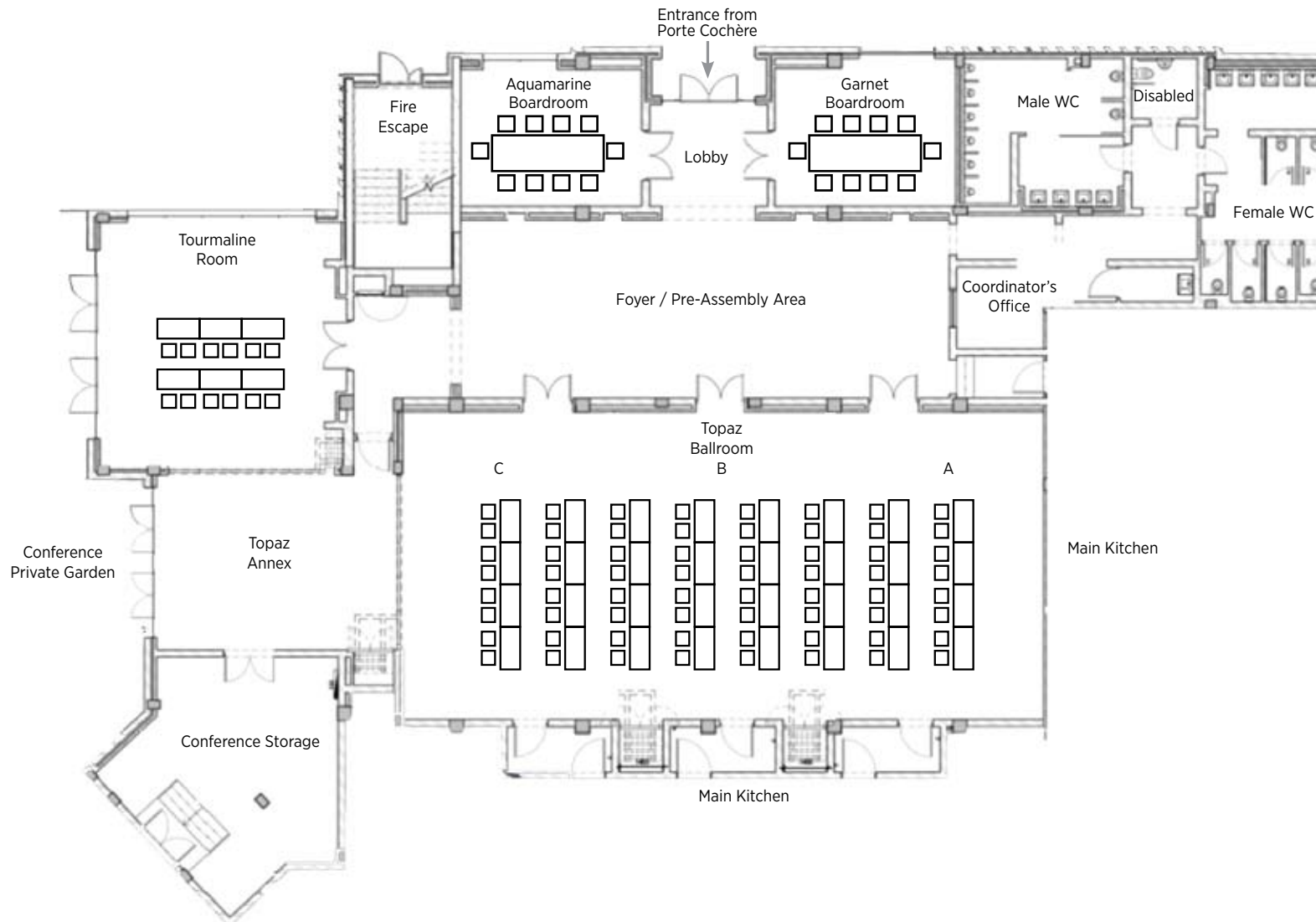
Topaz Ballroom - A & B = 110 / C = 33
 Tourmaline Room = 32
 Aquamarine or Garnet Board Room = 10

CINEMA STYLE



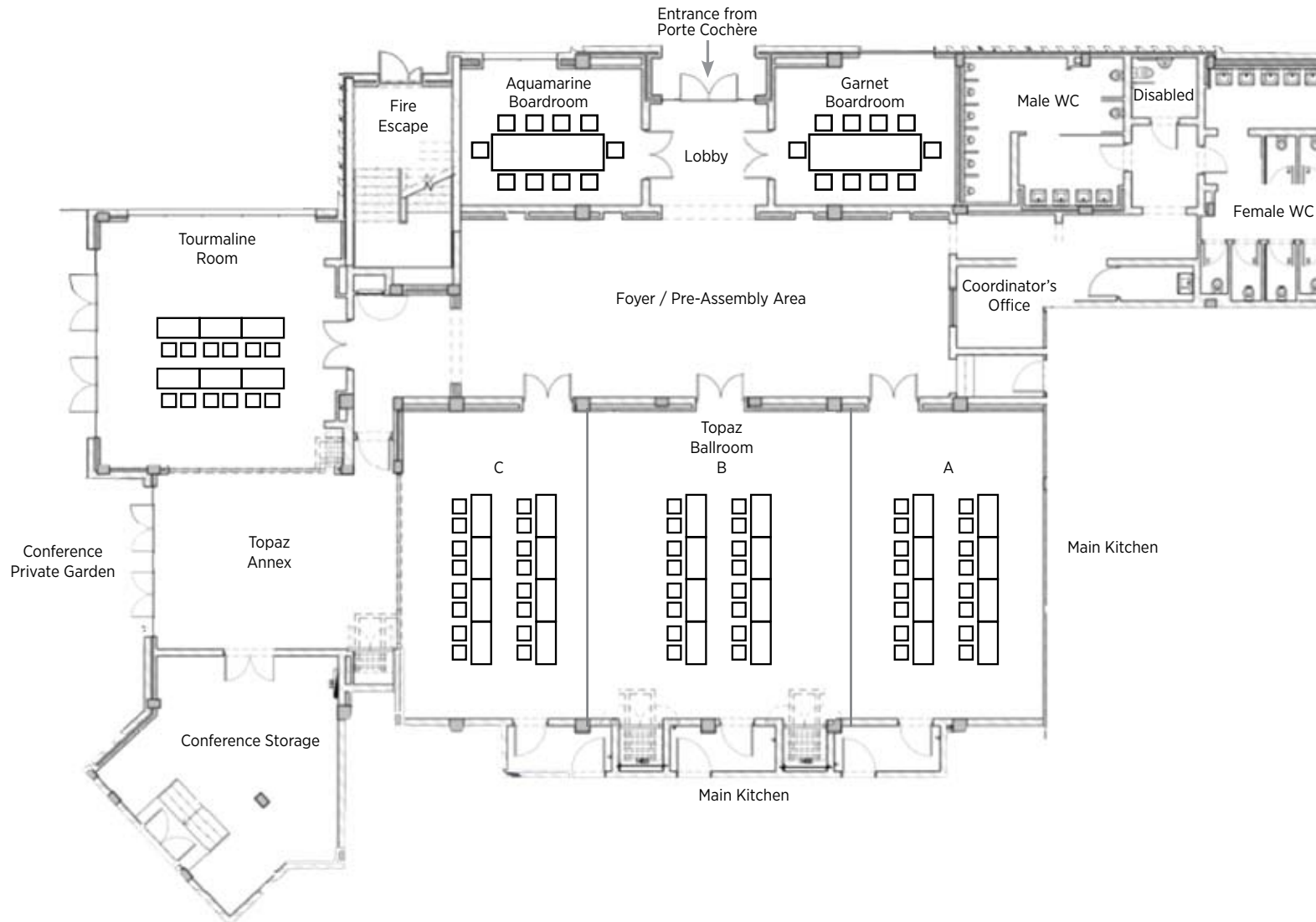
Topaz Ballroom - A = 44 / B & C = 99
 Tourmaline Room = 32
 Aquamarine or Garnet Board Room = 10

SCHOOL ROOM STYLE



Topaz Ballroom = 64
 Tourmaline Room = 12
 Aquamarine or Garnet Board Room = 10

SCHOOL ROOM STYLE

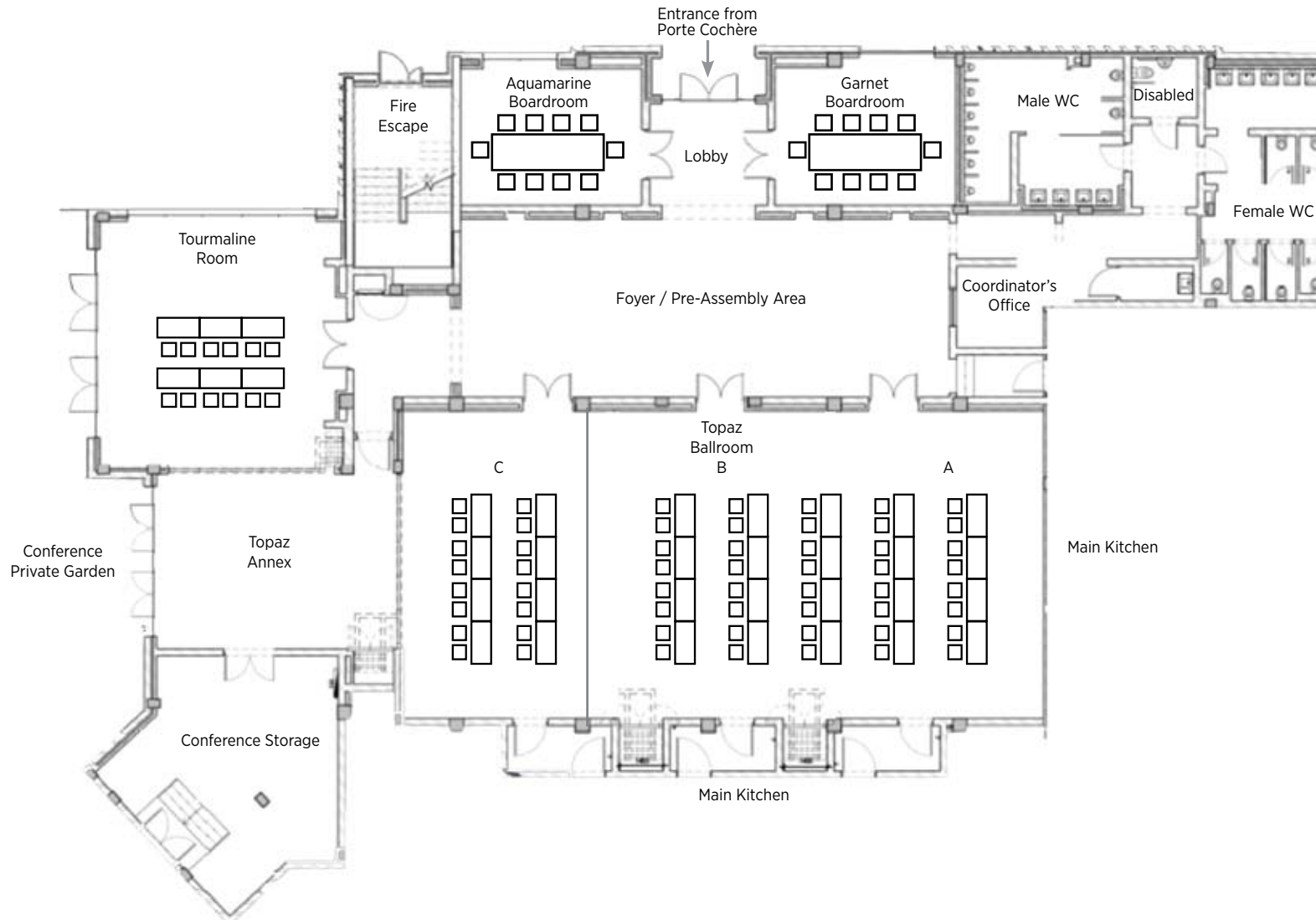


Topaz Ballroom - A = 16 / B = 16 / C = 16

Tourmaline Room = 12

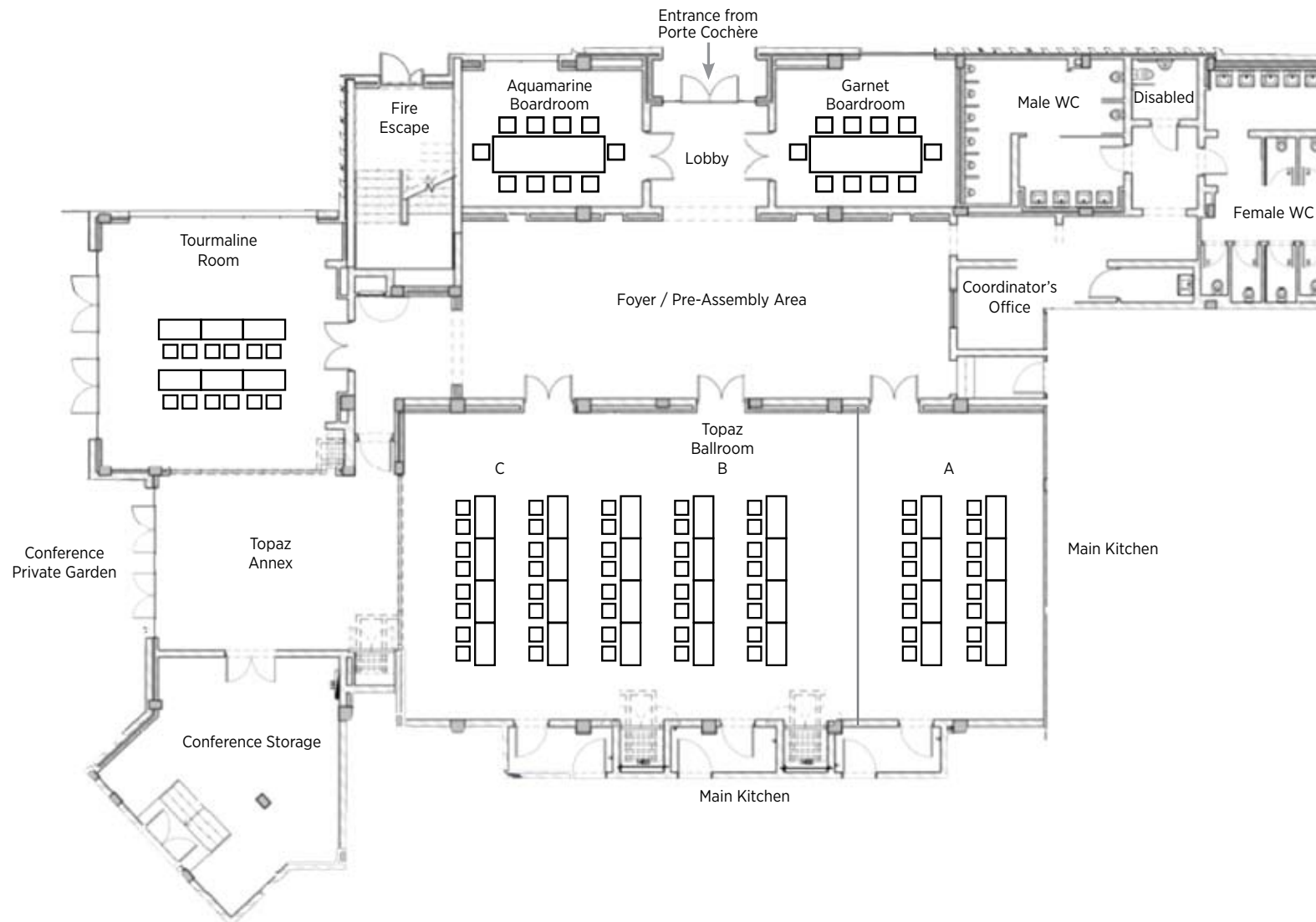
Aquamarine or Garnet Board Room = 10

SCHOOL ROOM STYLE



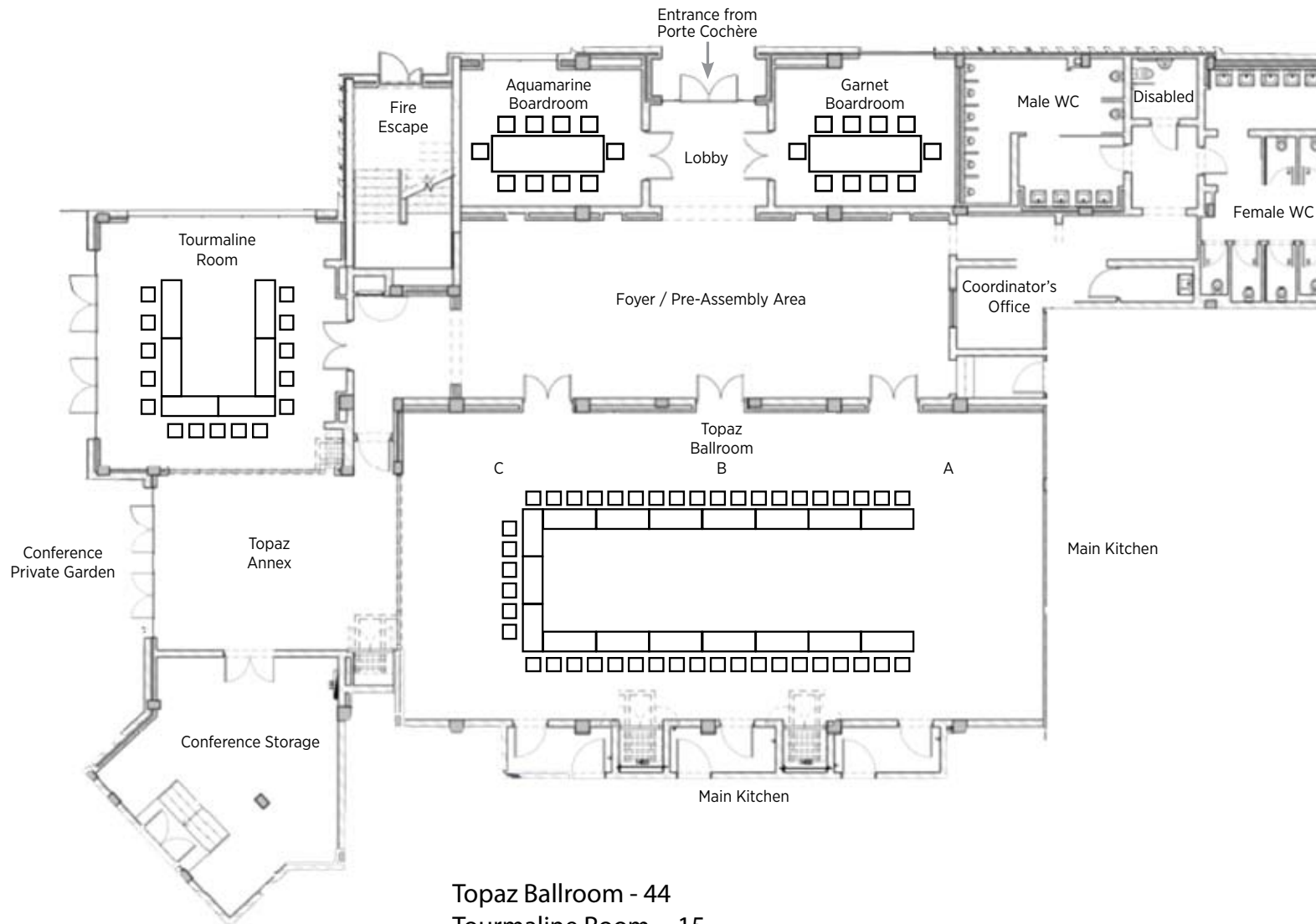
Topaz Ballroom - A & B = 40 / C = 16
 Tourmaline Room = 12
 Aquamarine or Garnet Board Room = 10

SCHOOL ROOM STYLE



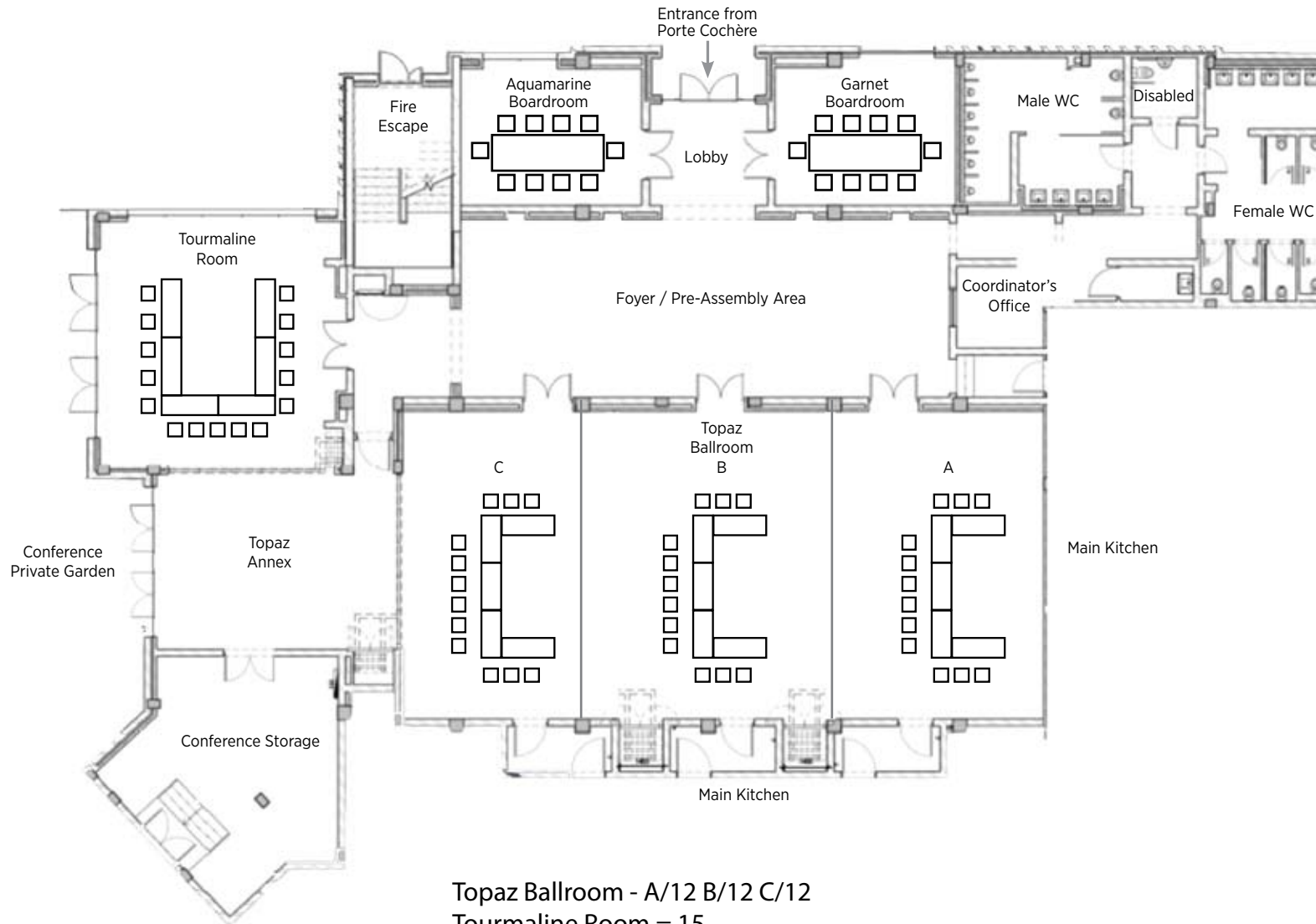
Topaz Ballroom - B & C = 40 / A = 16
 Tourmaline Room = 12
 Aquamarine or Garnet Board Room = 10

U-SHAPE STYLE



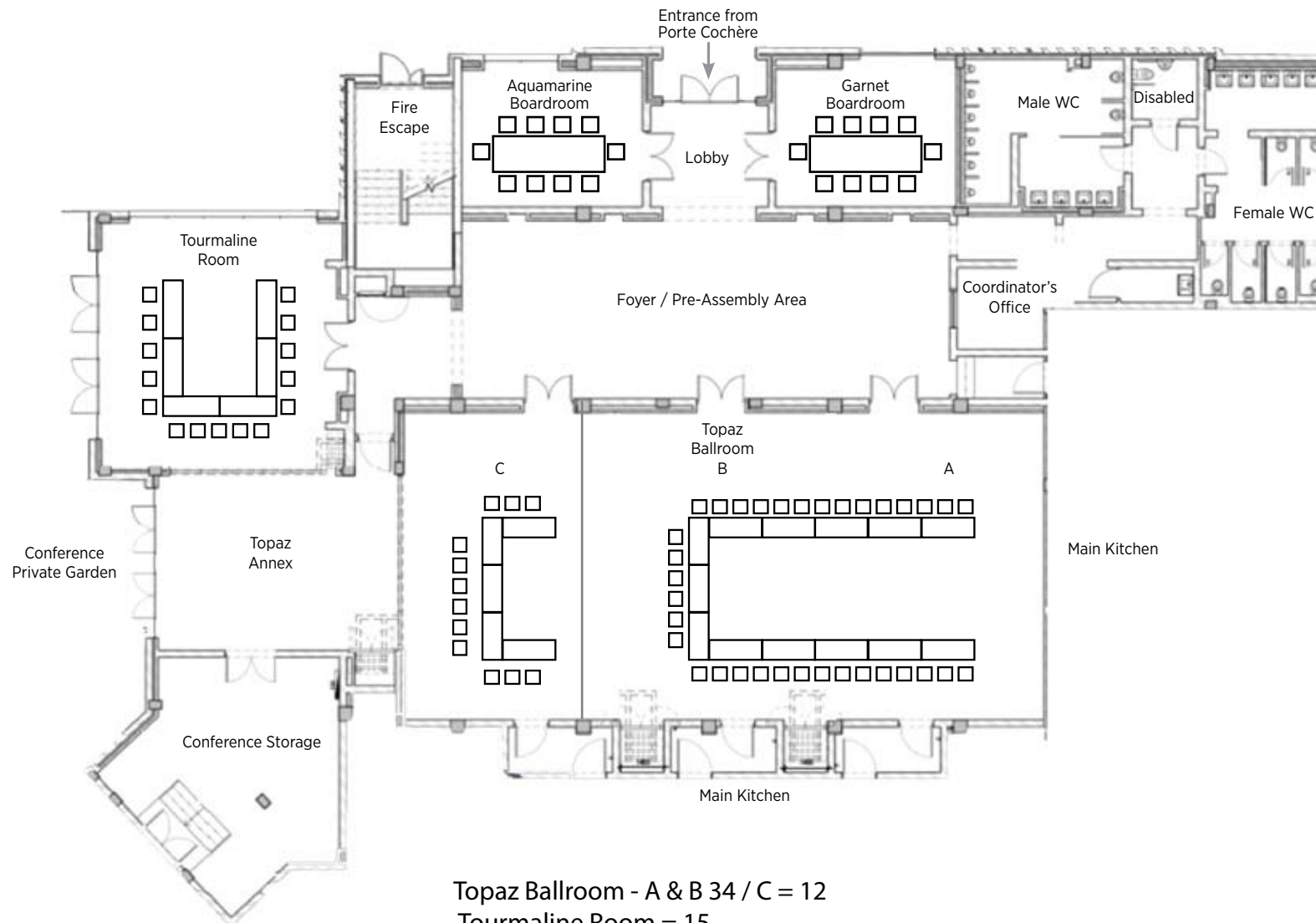
Topaz Ballroom - 44
Tourmaline Room = 15
Aquamarine or Garnet Board Room = 10

U-SHAPE STYLE



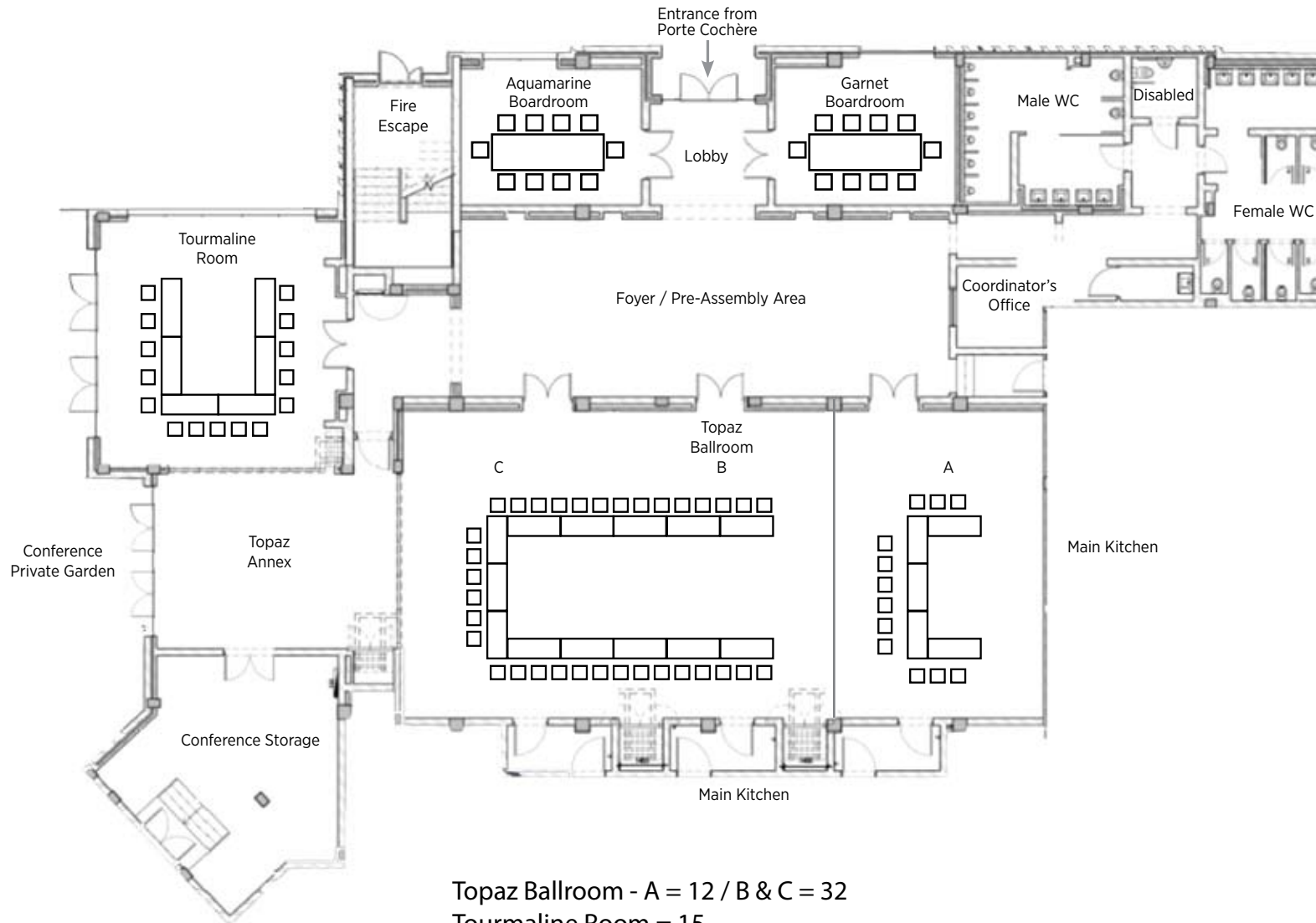
Topaz Ballroom - A/12 B/12 C/12
 Tourmaline Room = 15
 Aquamarine or Garnet Board Room = 10

U-SHAPE STYLE



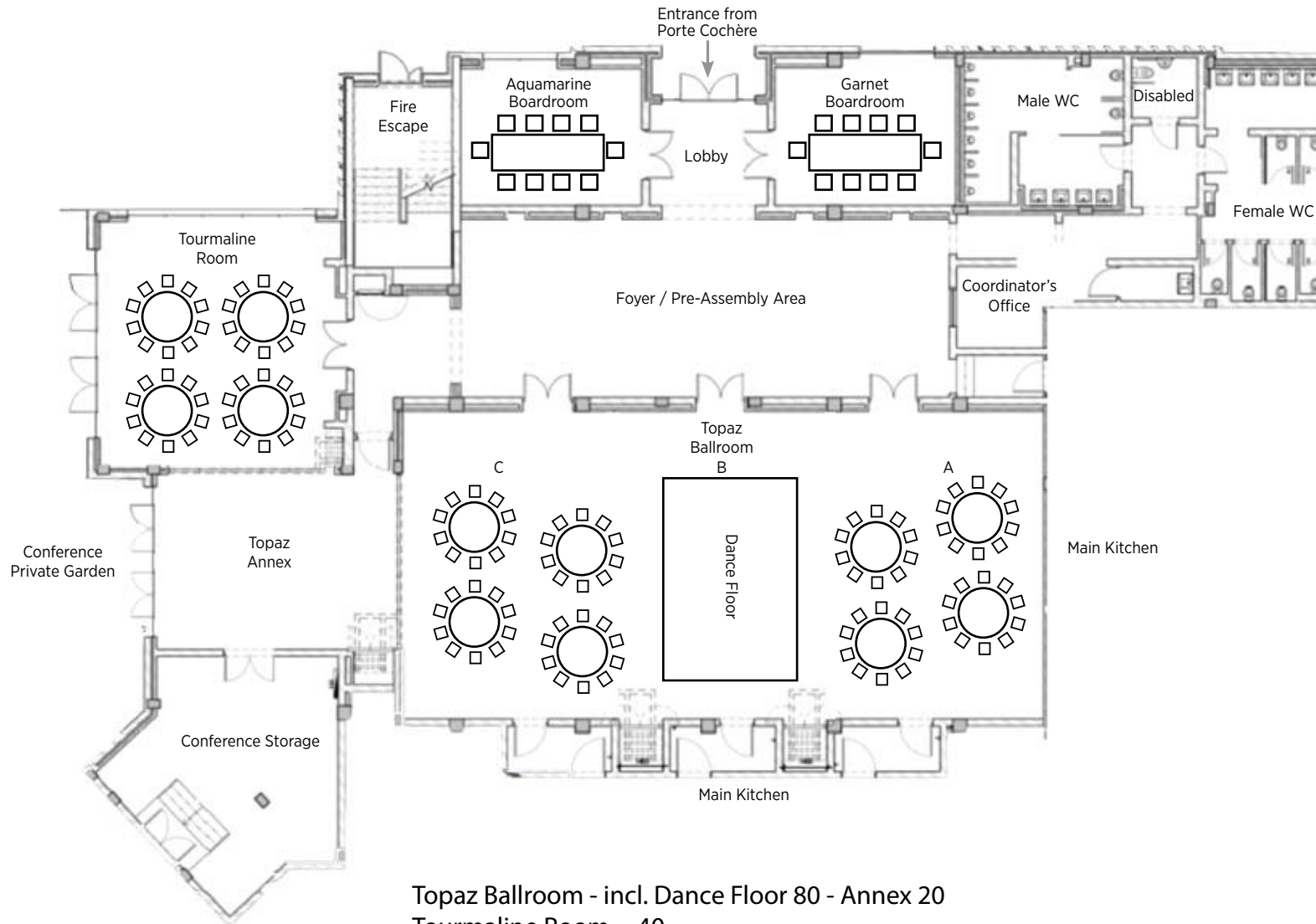
Topaz Ballroom - A & B 34 / C = 12
 Tourmaline Room = 15
 Aquamarine or Garnet Board Room = 10

U-SHAPE STYLE



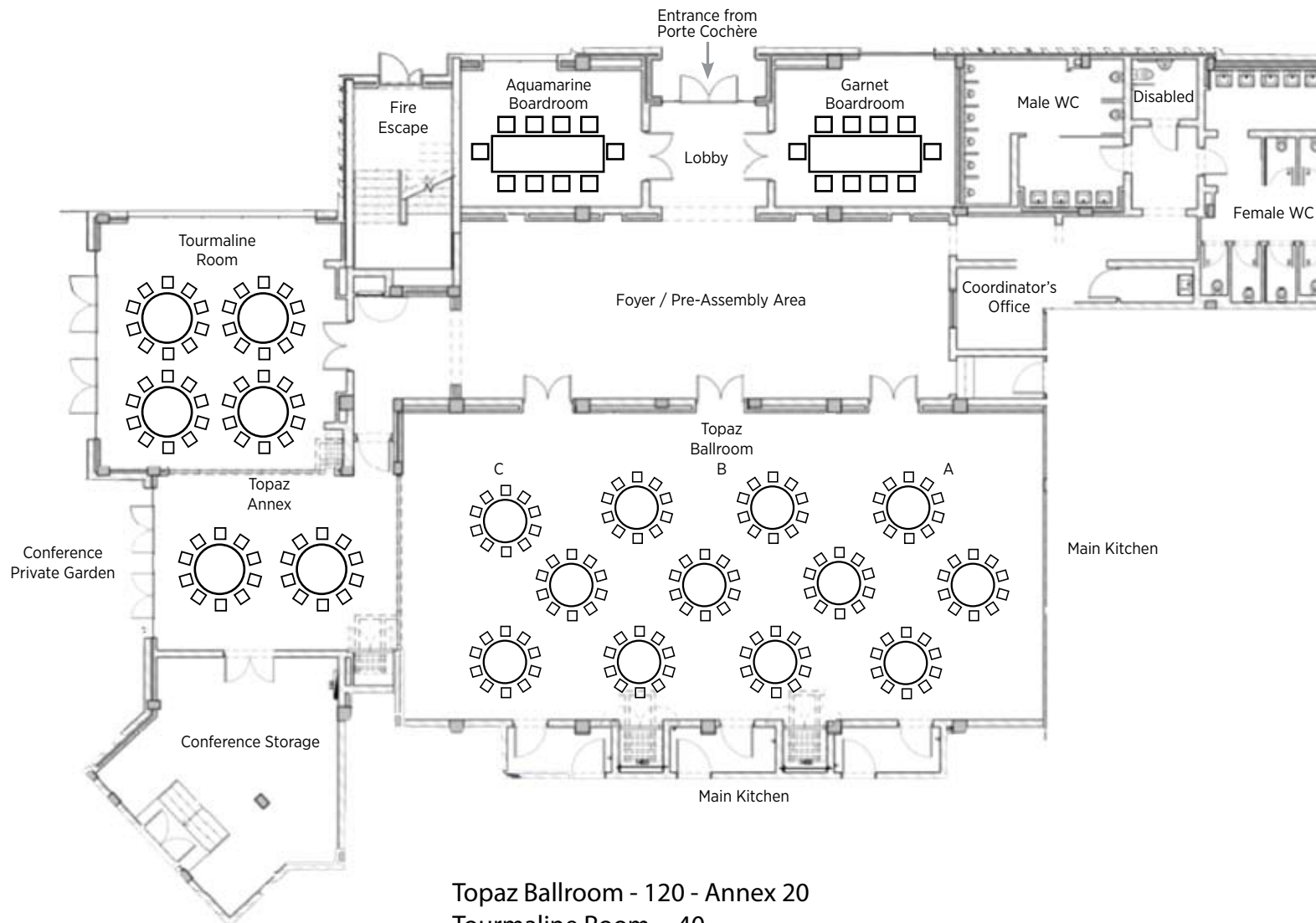
Topaz Ballroom - A = 12 / B & C = 32
 Tourmaline Room = 15
 Aquamarine or Garnet Board Room = 10

BANQUETING STYLE (WITH DANCE FLOOR)



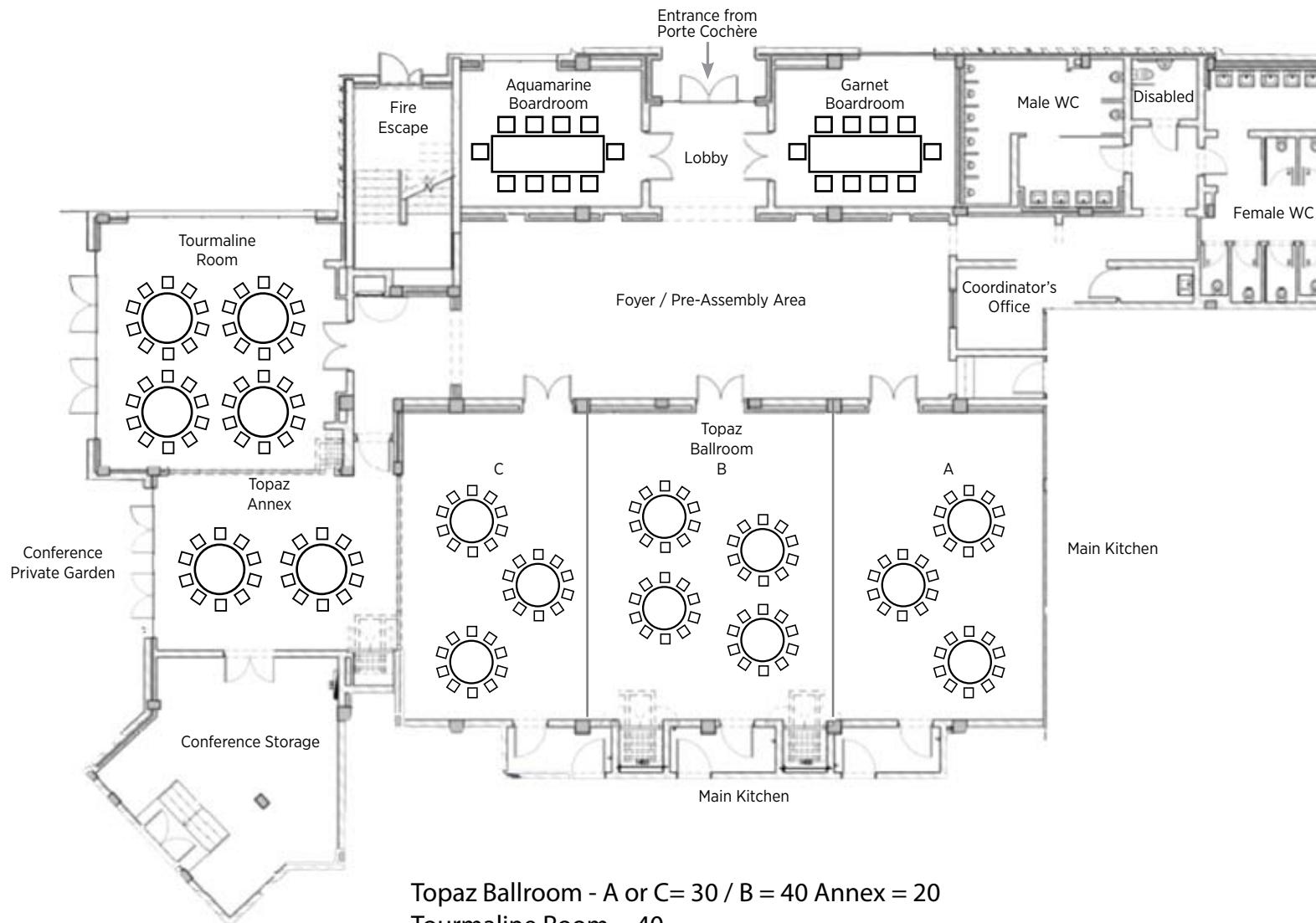
Topaz Ballroom - incl. Dance Floor 80 - Annex 20
 Tourmaline Room = 40
 Aquamarine or Garnet Board Room = 10

BANQUETING STYLE



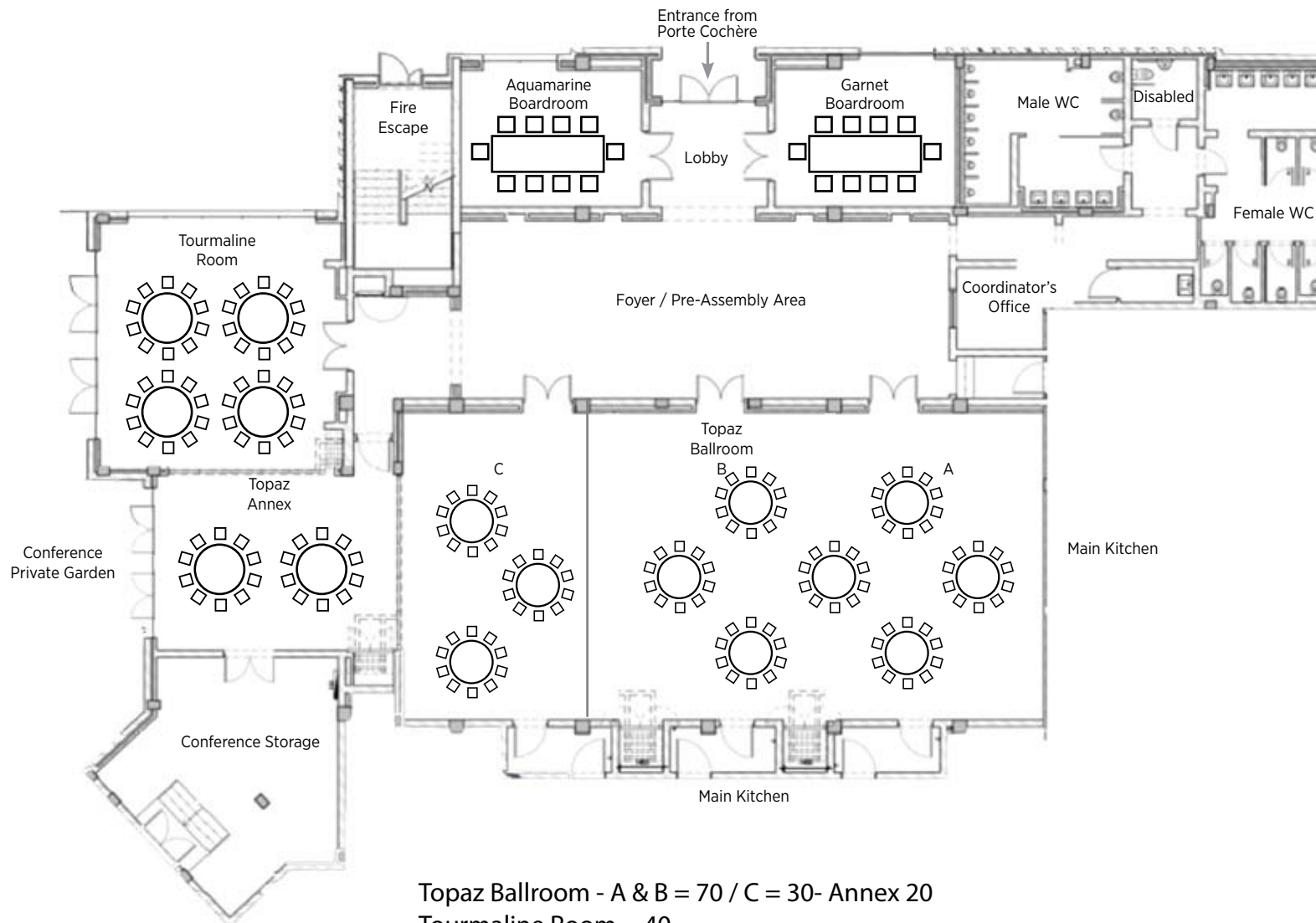
Topaz Ballroom - 120 - Annex 20
Tourmaline Room = 40
Aquamarine or Garnet Board Room = 10

BANQUETING STYLE



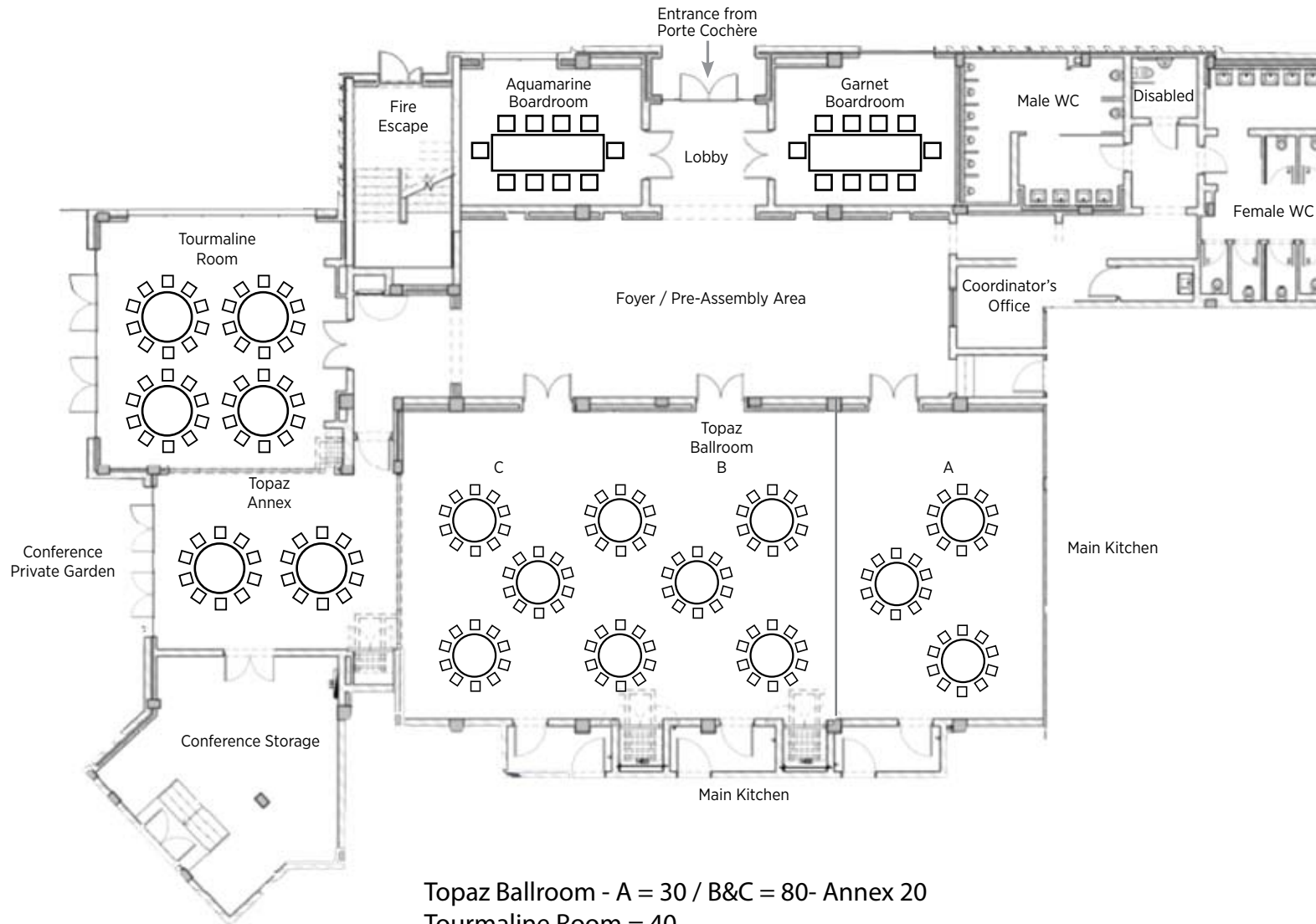
Topaz Ballroom - A or C= 30 / B = 40 Annex = 20
 Tourmaline Room = 40
 Aquamarine or Garnet Board Room = 10

BANQUETING STYLE



Topaz Ballroom - A & B = 70 / C = 30- Annex 20
 Tourmaline Room = 40
 Aquamarine or Garnet Board Room = 10

BANQUETING STYLE



Topaz Ballroom - A = 30 / B&C = 80- Annex 20
 Tourmaline Room = 40
 Aquamarine or Garnet Board Room = 10

